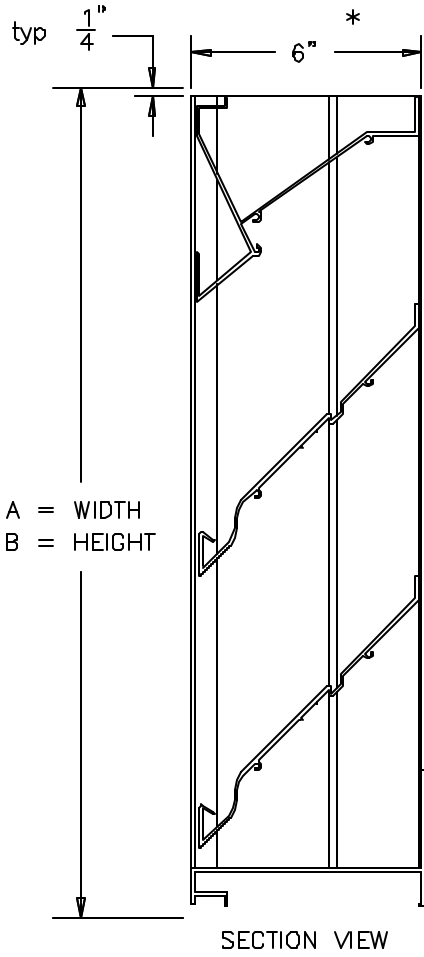


# EXTRUDED ALUMINUM, 6" DEEP, FIXED DRAINABLE TYPE BLADE



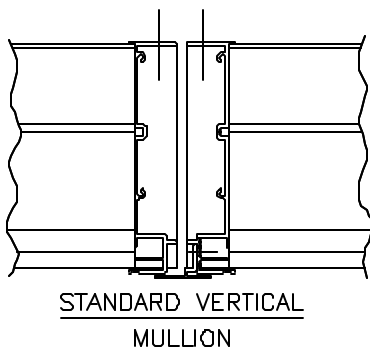
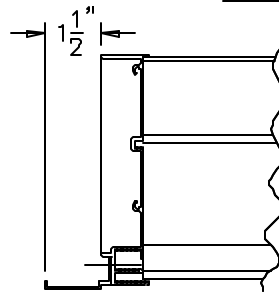
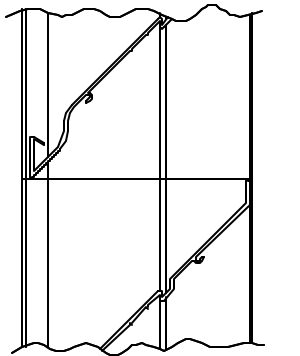
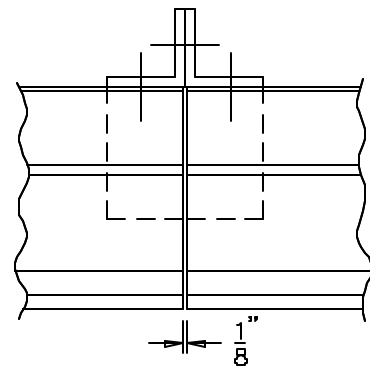
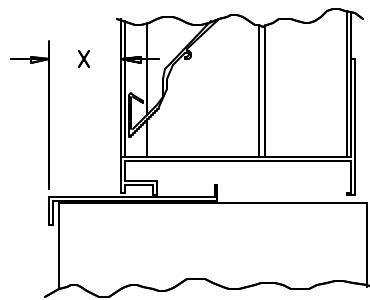
## MODEL X6D4 STANDARD SPECIFICATIONS

- FRAME: 6" DEEP CHANNEL, .081" THICK 6063-T5 EXTRUDED ALUMINUM ALLOY.
- BLADES: .081" THICK 6063-T5 EXTRUDED ALUMINUM ALLOY.
- FINISH: MILL.
- SCREEN: 1/2" REMOVABLE EXPANDED ALUMINUM BIRD SCREEN LOCATED ON INTERIOR.

MAXIMUM PANEL SIZE: 96" X 96".  
MINIMUM PANEL SIZE: 12" X 12".

DIMENSIONS: "A" (WIDTH) AND "B" (HEIGHT) ARE OPENING SIZES. LOUVERS ARE MADE 1/2" UNDERSIZE.

\* PANELS OVER 48" WIDE WILL BE 7-1/2" DEEP DUE TO A VERTICAL INTERIOR BLADE SUPPORT ANGLE.



CESCO certifies that the model X6D4 louver shown herein is licensed to bear the AMCA Seal. The ratings shown are based on tests and procedures performed in accordance with AMCA Publication 511 and comply with the requirements of the AMCA Certified Ratings Program. The AMCA Certified Ratings Seal applies to air performance ratings and water penetration ratings.



A MESTEK COMPANY

9300 73rd AVE NORTH  
Phone (888) 422-3726

MINNEAPOLIS, MN  
Fax (800) 241-9344

## X6D4 STATIONARY LOUVER

DRN. BY  
ESS

DWG. NO.

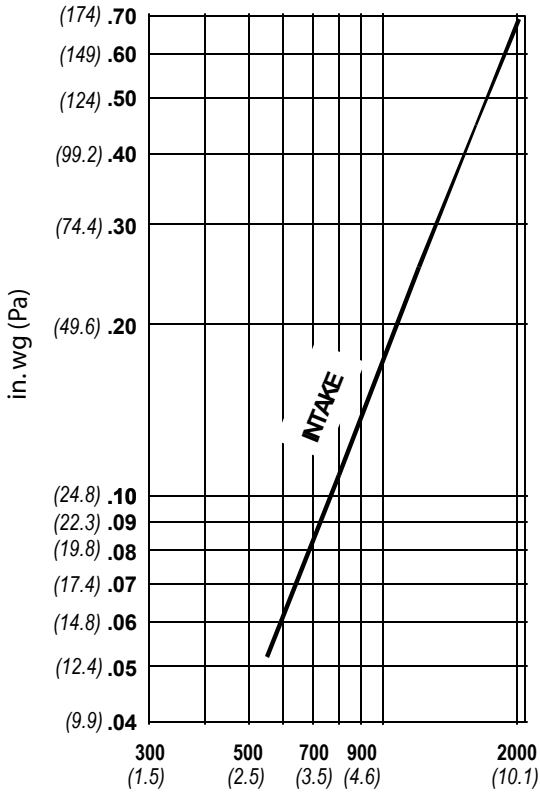
REV.

DATE  
12-29-00

X6D4

**Water Penetration** : .01 oz. (3.0 g.) at 1029 fpm (5.22 m/s) recommended free area velocity  
**Pressure Drop** : .17 in. wg. (42.2 Pa.) at 1029 fpm (5.22 m/s) and 8232 SCFM (3.88 scm/s)  
**Free Area** : 8.0 sq.ft. (0.743 sq. m.) = 50.% for 48" x 48" (1.22 m x 1.22 m) test size

**PRESSURE DROP**



VELOCITY THROUGH FREE AREA FPM (meters /sec.)

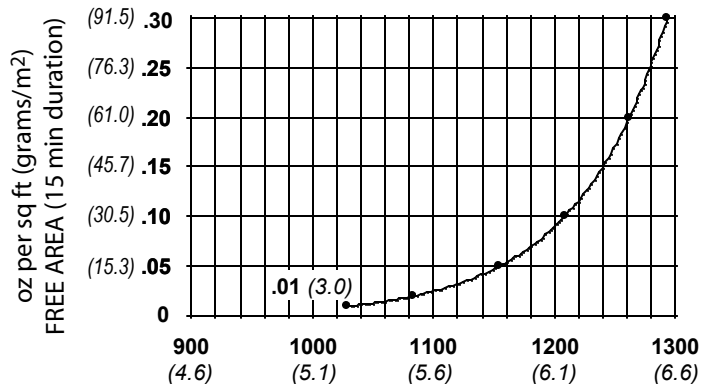
standard air - .075 lbs. per cu. ft.

Ratings do not include the effect of a bird screen

**FREE AREA IN SQUARE FEET (sq. meters)**

		WIDTH								
		in.	12	24	36	48	60	72	84	96
HEIGHT	in.	12	.247	.568	.889	1.21	1.49	1.81	2.13	2.45
	mm	304	.023	.053	.083	.112	.138	.168	.198	.228
	12	.761	1.75	2.74	3.72	4.59	5.58	6.56	7.55	
	304	.071	.162	.254	.346	.426	.518	.610	.702	
	24	1.19	2.73	4.27	5.81	7.16	8.70	10.24	11.78	
	609	.110	.254	.397	.540	.665	.808	.951	1.09	
	36	1.63	3.76	5.88	8.00	9.85	11.97	14.09	16.22	
	914	.152	.349	.546	.743	.915	1.11	1.31	1.51	
	48	2.25	5.18	8.10	11.03	13.59	16.51	19.43	22.36	
	1219	.209	.481	.753	1.024	1.26	1.53	1.81	2.08	
	60	2.58	5.92	9.26	12.60	15.52	18.86	22.20	25.54	
	1828	.239	.550	.860	1.17	1.44	1.75	2.06	2.37	
72	3.07	7.04	11.02	15.00	18.48	22.46	26.43	30.41		
2133	.285	.654	1.02	1.39	1.72	2.09	2.46	2.83		
84	3.58	8.22	12.86	17.50	21.56	26.20	30.84	35.48		
2438	.332	.763	1.19	1.63	2.00	2.43	2.87	3.30		

**WATER PENETRATION**



VELOCITY THROUGH FREE AREA FPM (meters /sec.)

Both maximum recommended free area velocity and beginning of water penetration are 1029 fpm at standard air - .075 lbs. per cu. ft. The above water penetration data is based on mill finish, 48" x 48" test size per AMCA Standard 511.

Openings that require multiple louver panels in both width and height will require internal structural supports. It is recommended that large openings be divided with structural members so that the louvers will span either width or height with a single panel. Unusually high wind loading may require structural supports on non-multiple wide and multiple high assemblies. **Structural supports and mounting accessories are not supplied as a standard.**



CESSCO certifies that the model X6D4 louver shown herein is licensed to bear the AMCA Seal. The ratings shown are based on tests and procedures performed in accordance with AMCA Publication 511 and comply with the requirements of the AMCA Certified Ratings Program. The AMCA Certified Ratings Seal applies to air performance ratings and water penetration ratings.

**X6D4**

Below is an explanation of how to use the AMCA Performance data for the recommended free area velocity of 1029 fpm (5.22 m/s).

To determine minimum free area required for louver:

**Step #1:** Divide the required CFM flow by the maximum recommended free area velocity.

**Step #2:** Select the most desirable louver size, from the free area table, that meets the minimum free area requirement.

**Step #3:** Compare specified performance to the certified water penetration and pressure drop ratings.

Example: Given 15,000 CFM design flow

**Step #1:**

$$\text{min. free area} = \frac{\text{Design CFM}}{\text{Max. Recommended Velocity}} = \frac{15,000}{1029} = 14.57 \text{ sq. ft.}$$

**Step #2:** From the free area table above the approximate